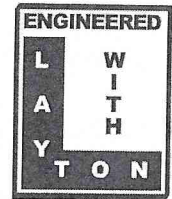


Engineered With Layton, PLC  
1490 South Price Road, Suite 215  
Chandler, Arizona 85286

9 July 2021

RE: Granite Mountain Homesites, Unit V, Phase 4 - 6



### To Whom It May Concern:

Engineered With Layton, PLC is acting on behalf of The Levie Group to subdivide the remaining Phases within Unit V of the Granite Mountain Homesites. EWL has engaged the Yavapai County and is currently at the preliminary stage of the process.

As part of the platting process, the Country has directed EWL to notify all property owners within the close vicinity of the project site.

For reference, the project site and its vicinity are shown below in *Figure 1*.

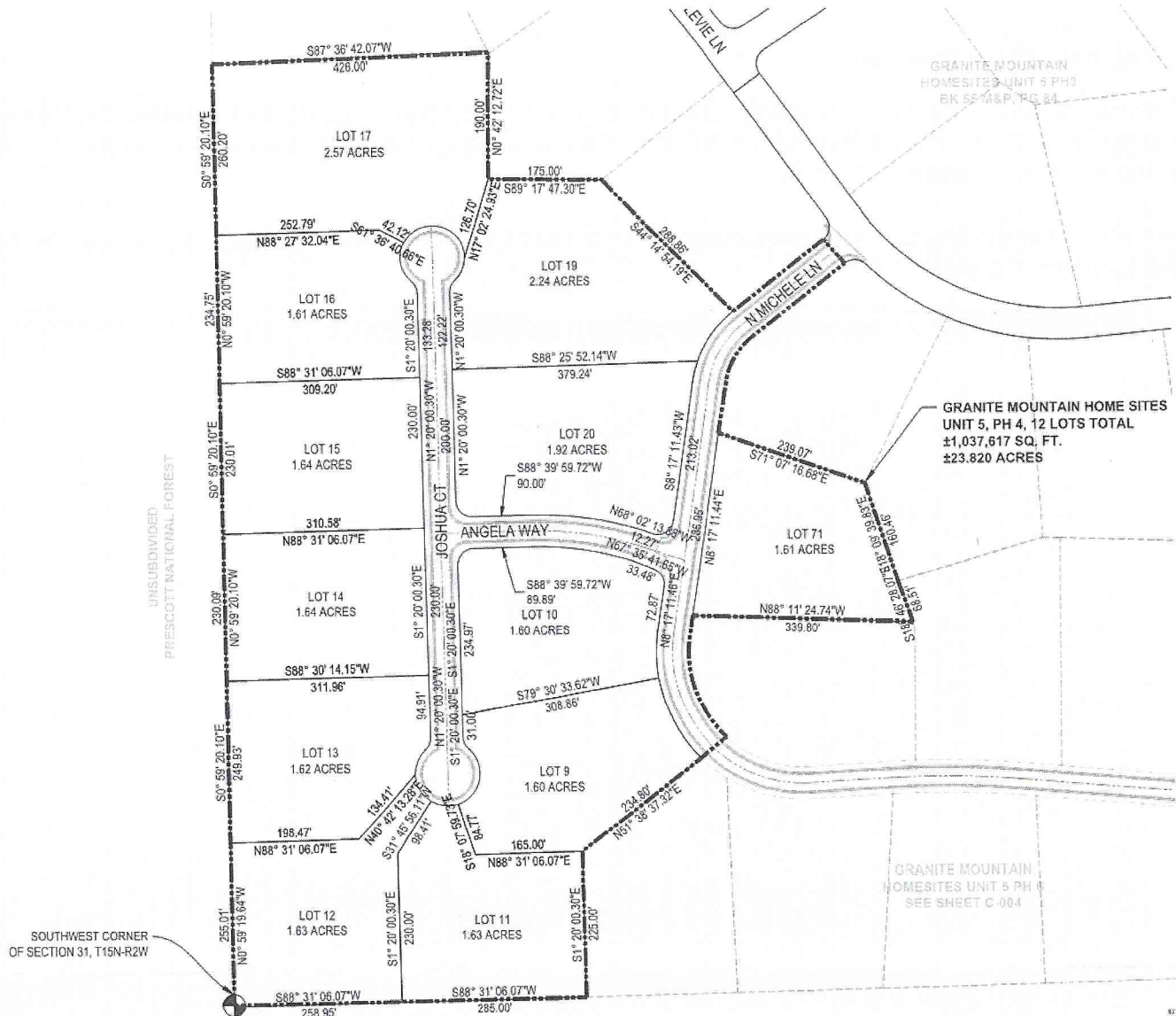


Figure 1: Granite Mountain Homesites, Unit V, Phase 4 – 6 Proposed Subdivisions

The ultimate purpose of this project is to subdivide the remaining lots, construct roadway and utility improvements, and provide necessary infrastructure upgrades.

The three lots to be subdivided for residential development are as follows:

#### Granite Mountain Homesites Unit 5, Phase 4



Yavapai County APN #:	102-10-005Q
Physical Address:	5991 N Michelle Ln
Lot Size (Undivided):	±1,037,617-ft <sup>2</sup> (±23.820-Acres)
Local Zoning:	Yavapai County Government, R1L-70
Proposed No. of Lots:	12-Lots Total

GRANITE MOUNTAIN HOMESITES UNIT 5, PH 5, 7 LOTS TOTAL  
±886,923 SQ. FT.  
±20.361 ACRES

GRANITE MOUNTAIN HOMESITES UNIT 4  
BK 26 M&P, PG 9

GRANITE MOUNTAIN HOMESITES UNIT 4  
BK 26 M&P, PG 9

UNSUBDIVIDED  
PRESCOTT NATIONAL FOREST

GRANITE MOUNTAIN HOMESITES UNIT 5 PH 1 AMENDED  
BK 38 M&P, PG 46

LOT 33  
3.57 ACRES

LOT 32  
2.77 ACRES

LOT 31  
2.65 ACRES

LOT 30  
4.11 ACRES

LOT 29  
3.00 ACRES

LOT 34  
1.70 ACRES

LOT 35  
1.88 ACRES

DANIELLE DRIVE

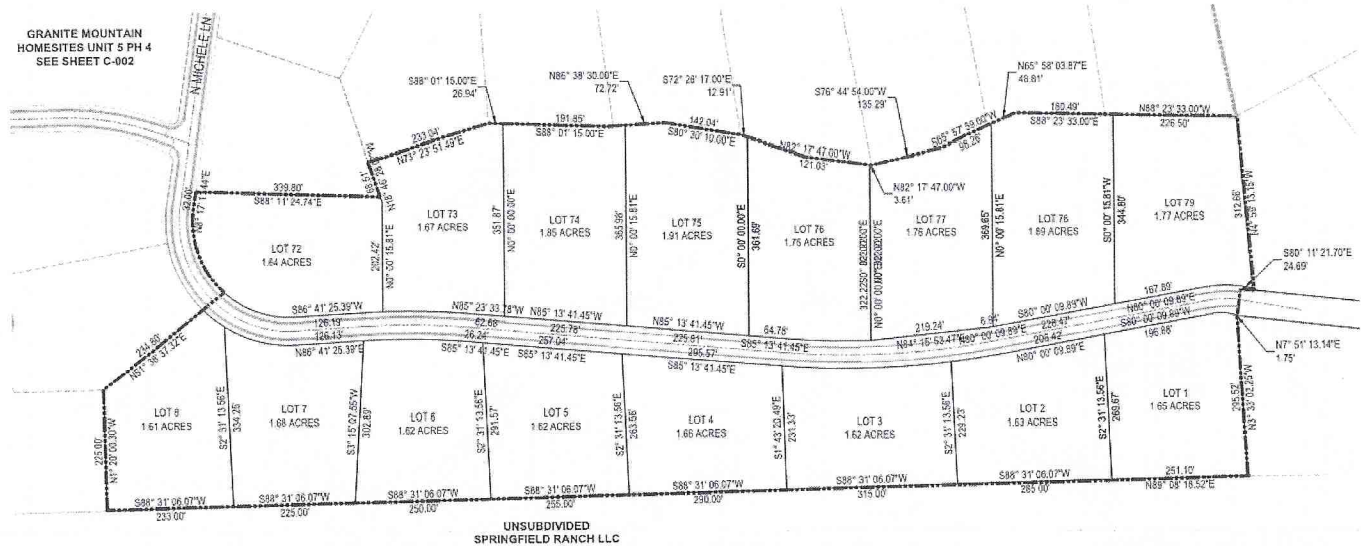
W RAINMAKER

Boundaries and Distances:  
 - North: N35° 29' 30.00"E 80.00', N58° 29' 55.54"W 330.00', N59° 46' 17.16"W 210.00', N39° 46' 17.16"W 237.94', N78° 52' 12.65"W 238.77', S30° 51' 09.32"W 187.00', S72° 50' 09.42"W 230.16', S69° 55' 40.17"W 163.32', S23° 38' 42.12"E 0.00', N76° 30' 24.98"W 450.00', N1° 20' 00.30"W 240.00', N1° 20' 00.30"W 231.85', N62° 38' 45.00"E 275.00', N62° 38' 45.00"E 151.76', N62° 38' 45.00"E 332.42', N58° 29' 55.54"W 332.42', N39° 46' 17.16"W 237.94', N78° 52' 12.65"W 238.77', S30° 51' 09.32"W 187.00', S72° 50' 09.42"W 230.16', S69° 55' 40.17"W 163.32', S23° 38' 42.12"E 0.00', N76° 30' 24.98"W 450.00', N1° 20' 00.30"W 240.00', N1° 20' 00.30"W 231.85', N62° 38' 45.00"E 275.00', N62° 38' 45.00"E 151.76', N62° 38' 45.00"E 332.42', N58° 29' 55.54"W 330.00', N59° 46' 17.16"W 210.00', N39° 46' 17.16"W 237.94', N78° 52' 12.65"W 238.77', S30° 51' 09.32"W 187.00', S72° 50' 09.42"W 230.16', S69° 55' 40.17"W 163.32', S23° 38' 42.12"E 0.00', N76° 30' 24.98"W 450.00', N1° 20' 00.30"W 240.00', N1° 20' 00.30"W 231.85', N62° 38' 45.00"E 275.00', N62° 38' 45.00"E 151.76', N62° 38' 45.00"E 332.42', N58° 29' 55.54"W 330.00', N59° 46' 17.16"W 210.00', N39° 46' 17.16"W 237.94', N78° 52' 12.65"W 238.77', S30° 51' 09.32"W 187.00', S72° 50' 09.42"W 230.16', S69° 55' 40.17"W 163.32', S23° 38' 42.12"E 0.00', N76° 30' 24.98"W 450.00', N1° 20' 00.30"W 240.00', N1° 20' 00.30"W 231.85', N62° 38' 45.00"E 275.00', N62° 38' 45.00"E 151.76', N62° 38' 45.00"E 332.42', N58° 29' 55.54"W 330.00', N59° 46' 17.16"W 210.00', N39° 46' 17.16"W 237.94', N78° 52' 12.65"W 238.77', S30° 51' 09.32"W 187.00', S72° 50' 09.42"W 230.16', S69° 55' 40.17"W 163.32', S23° 38' 42.12"E 0.00', N76° 30' 24.98"W 450.00', N1° 20' 00.30"W 240.00', N1° 20' 00.30"W 231.85', N62° 38' 45.00"E 275.00', N62° 38' 45.00"E 151.76', N62° 38' 45.00"E 332.42', N58° 29' 55.54"W 330.00', N59° 46' 17.16"W 210.00', N39° 46' 17.16"W 237.94', N78° 52' 12.65"W 238.77', S30° 51' 09.32"W 187.00', S72° 50' 09.42"W 230.16', S69° 55' 40.17"W 163.32', S23° 38' 42.12"E 0.00', N76° 30' 24.98"W 450.00', N1° 20' 00.30"W 240.00', N1° 20' 00.30"W 231.85', N62° 38' 45.00"E 275.00', N62° 38' 45.00"E 151.76', N62° 38' 45.00"E 332.42', N58° 29' 55.54"W 330.00', N59° 46' 17.16"W 210.00', N39° 46' 17.16"W 237.94', N78° 52' 12.65"W 238.77', S30° 51' 09.32"W 187.00', S72° 50' 09.42"W 230.16', S69° 55' 40.17"W 163.32', S23° 38' 42.12"E 0.00', N76° 30' 24.98"W 450.00', N1° 20' 00.30"W 240.00', N1° 20' 00.30"W 231.85', N62° 38' 45.00"E 275.00', N62° 38' 45.00"E 151.76', N62° 38' 45.00"E 332.42', N58° 29' 55.54"W 330.00', N59° 46' 17.16"W 210.00', N39° 46' 17.16"W 237.94', N78° 52' 12.65"W 238.77', S30° 51' 09.32"W 187.00', S72° 50' 09.42"W 230.16', S69° 55' 40.17"W 163.32', S23° 38' 42.12"E 0.00', N76° 30' 24.98"W 450.00', N1° 20' 00.30"W 240.00', N1° 20' 00.30"W 231.85', N62° 38' 45.00"E 275.00', N62° 38' 45.00"E 151.76', N62° 38' 45.00"E 332.42', N58° 29' 55.54"W 330.00', N59° 46' 17.16"W 210.00', N39° 46' 17.16"W 237.94', N78° 52' 12.65"W 238.77', S30° 51' 09.32"W 187.00', S72° 50' 09.42"W 230.16', S69° 55' 40.17"W 163.32', S23° 38' 42.12"E 0.00', N76° 30' 24.98"W 450.00', N1° 20' 00.30"W 240.00', N1° 20' 00.30"W 231.85', N62° 38' 45.00"E 275.00', N62° 38' 45.00"E 151.76', N62° 38' 45.00"E 332.42', N58° 29' 55.54"W 330.00', N59° 46' 17.16"W 210.00', N39° 46' 17.16"W 237.94', N78° 52' 12.65"W 238.77', S30° 51' 09.32"W 187.00', S72° 50' 09.42"W 230.16', S69° 55' 40.17"W 163.32', S23° 38' 42.12"E 0.00', N76° 30' 24.98"W 450.00', N1° 20' 00.30"W 240.00', N1° 20' 00.30"W 231.85', N62° 38' 45.00"E 275.00', N62° 38' 45.00"E 151.76', N62° 38' 45.00"E 332.42', N58° 29' 55.54"W 330.00', N59° 46' 17.16"W 210.00', N39° 46' 17.16"W 237.94', N78° 52' 12.65"W 238.77', S30° 51' 09.32"W 187.00', S72° 50' 09.42"W 230.16', S69° 55' 40.17"W 163.32', S23° 38' 42.12"E 0.00', N76° 30' 24.98"W 450.00', N1° 20' 00.30"W 240.00', N1° 20' 00.30"W 231.85', N62° 38' 45.00"E 275.00', N62° 38' 45.00"E 151.76', N62° 38' 45.00"E 332.42', N58° 29' 55.54"W 330.00', N59° 46' 17.16"W 210.00', N39° 46' 17.16"W 237.94', N78° 52' 12.65"W 238.77', S30° 51' 09.32"W 187.00', S72° 50' 09.42"W 230.16', S69° 55' 40.17"W 163.32', S23° 38' 42.12"E 0.00', N76° 30' 24.98"W 4

1490 S. Price Rd., Suite #215, Chandler, AZ 85286 – [www.engineeredwithlavton.com](http://www.engineeredwithlavton.com)



## Granite Mountain Homesites Unit 5, Phase 6



Yavapai County APN #: 102-10-005L  
 Physical Address: Not Applicable  
 Lot Size (Undivided):  $\pm 1,399,147\text{-ft}^2$  ( $\pm 32.120\text{-Acres}$ )  
 Local Zoning: Yavapai County Government, R1L-70  
 Proposed No. of Lots: 16-Lots Total

The proposed replat with aerial imagery captured by Engineered With Layton is available for viewing online. The aerial survey was performed in March 2021 via sUAS by EWL's FAA 107 Licensed Pilot.

Please navigate to the following website to view the aerial survey: <https://bit.ly/36p94as>

The Neighborhood Community Meeting will be held onsite at the following location:

Location: 2855 Levie Lane  
 Prescott, Arizona 86305  
 (Intersection of Levie Lane and Nicholes Knoll)  
<https://goo.gl/maps/QghxyYnQLY4nHZtQ7>

Date: 20 July 2021  
 Time: 1730-Hrs (MST)

Prior to the meeting, please submit any questions or concerns regarding the proposed project to Engineered With Layton via email at [jeremiah@engwlayton.com](mailto:jeremiah@engwlayton.com). All questions, concerns, and feedback provided by the community members will be organized into a document for distribution following the meeting.

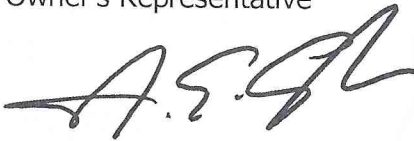
If the project moves forward, the project will become a case at a public hearing of the Planning and Zoning Commission. You will be notified of the date and time of the public hearing. The Planning and Zoning Commission currently holds virtual meetings via Webex. The links are generally posted at the Yavapai County Planning & Zoning website one week prior to the meeting.

The Yavapai County Planning Unit can be contacted at 928.771.3214 if you have any questions about the public hearing process. The hours of operation for the Planning Unit are Monday through Friday, from 0700-hrs to 1600-hrs.

If you cannot attend the meeting or require special assistance, please call at 480.616.0011 or email at [jeremiah@engwlayton.com](mailto:jeremiah@engwlayton.com).

Sincerely,

**Engineered With Layton, P.L.C.**  
Owner's Representative



Digitally  
signed by N.  
Emery  
Layton, PE  
Date:  
2021.07.09  
08:19:43  
-07'00'

**Manager**

**9 Jul 2021**

---

N. Emery Layton, P.E., MLT  
Principal Engineer, Owner

[www.engineeredwithlayton.com](http://www.engineeredwithlayton.com)  
[www.ewlaerialtech.com](http://www.ewlaerialtech.com)



